

CCG

Real Estate Brokerage & Acquisition

A Consortium Consulting Group, Inc. Company

ID# : R-ELIZABETH

1317 Elizabeth Street – Elizabeth Center

Type	Usable Area	Availability
Commercial Store	approx. 330 Sqft.	March 1, 2012



\$8,500 /mo.

Notes :

- * Utilities not included
- * 5% increase per year
- * Up to 5 years term
- * 3-month security

Location – Google Maps



*This information may only be used as reference,
all matters should check with the offering plan from the building.*

212.986.7054 | www.CCG-BPC.com | 200 Rector Place

CCG

Real Estate Brokerage & Acquisition

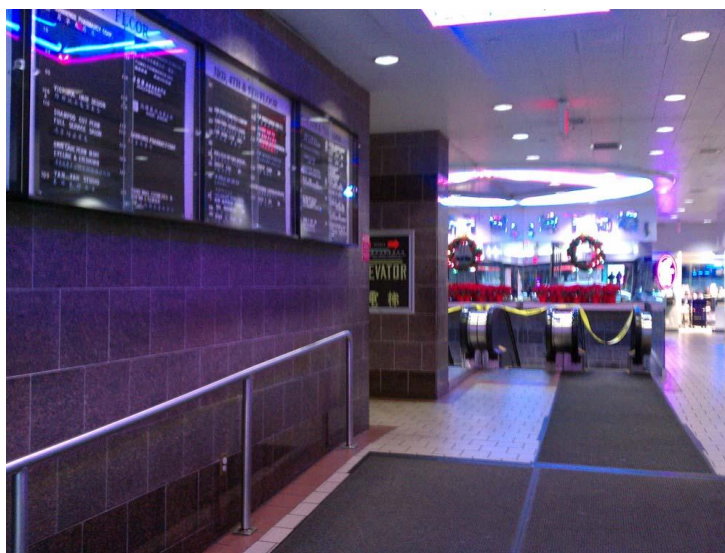
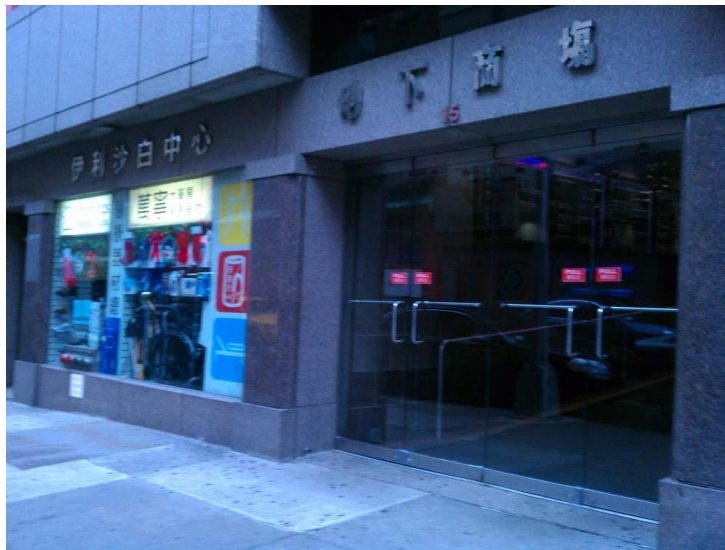
A Consortium Consulting Group, Inc. Company

ID# : R-ELIZABETH

1317 Elizabeth Street – Elizabeth Center

Type	Usable Area	Availability
Commercial Store	approx. 330 Sqft.	March 1, 2012

More Pictures



*This information may only be used as reference,
all matters should check with the offering plan from the building.*

212.986.7054 | www.CCG-BPC.com | 200 Rector Place