

---

JULY 2010

# BATTERY PARK CITY LIVING GUIDE



**CCG**

**BPC Premier Real Estate Broker**

**[www.CCG-BPC.com](http://www.CCG-BPC.com)**







**212.786.9054**

200 Rector Place, New York, NY 10280




# CONTENTS

(Last updated: 07/21/10. Check our website for latest updates.)

## GETTING SETTLED ..... Page 3-4

-  Utilities
-  Phone Companies
-  Cable Companies
-  Post Office
-  Newspapers
-  Cleaners

## GETTING AROUND ..... Page 5-7

-  BPC Shuttle Bus Map
-  Public Buses and Subway
-  Taxi/Car Service

## BANKS ..... Page 8

## GROCERIES ..... Page 9

## DELI'S.....Page 10

## PHARMACIES & HARDWARE ..... Page 11

## LOCAL SHOPPING ..... Page 12-14






## CAFE ..... Page 15

## RESTAURANT,..... Page 16-18

## A QUICK BITE,..... Page 19-20

## LOUNGES MUSEUM & CULTURE..... Page 21

## SERVICES ..... Page 23-24

-  Repairs
-  Wireless / Cellular
-  Hair Salon
-  Photo Finishing
-  Video Rentals

## HEALTH & FITNESS ..... Page 25


# CCG

## TABLE OF CONTENTS





CHILD CARE & LOCAL SCHOOLS ..... Page 26

-  Public Schools
-  Child Care Centers



DRIVING & PARKING..... Page 27

-  New York State Dept. of Motor Vehicles
-  Garage

TRAVELING ..... Page 29-30

-  Airlines
-  Driving Directions for JFK Airport
-  Driving Directions for LaGuardia Airport
-  Driving Directions for Newark Airport

HEALTH & SAFETY..... Page 31

-  Police Department
-  Hospitals / Doctors

USEFUL NUMBERS ..... Page 32

TIME ZONES ..... Page 33

INFORMATION WEBSITES ..... Page 34

# CCG



## GETTING SETTLED



### UTILITIES



(800) 752-6633  
[www.conedison.com](http://www.conedison.com)

### PHONE COMPANIES



(212) 890-1550  
[www.verizon.com](http://www.verizon.com)

### CABLE COMPANIES



(800) R I N G – R C N  
7 4 6 4 7 2 6  
[www.rcn.com](http://www.rcn.com)



(212) 358-0900  
[www.timewarnercable.com](http://www.timewarnercable.com)

### POST OFFICE



**Church Street Station/Bowling Green Station**  
90 Church Street  
New York, NY 10007

(800) 330-5001  
(800) A S K – U S P S  
2 7 5 8 7 7 7  
[www.usps.com](http://www.usps.com)



90 Church Street  
New York, NY 10007

(212) 514-9460

# CCG



## GETTING SETTLED



### NEWSPAPERS

**The New York Times**

(800) N Y – T I M E S

6 9 8 4 6 3 7

[www.nytimes.com](http://www.nytimes.com)

**THE WALL STREET JOURNAL**

(800) 369-2834

<http://online.wsj.com>

NEW YORK'S HOMETOWN CONNECTION WWW.NYDAILYNEWS.COM  
**DAILY NEWS**

(800) 692-6397

[www.nydailynews.com](http://www.nydailynews.com)

**NEW YORK POST**

(212) 930-8000

[www.nypost.com](http://www.nypost.com)

### CLEANERS

**Four Seasons Dry Cleaners**

21 South End Avenue, New York, NY 10280

(212) 786-4543

**South Cove French Cleaners**

2 South End Avenue, New York, NY 10280

(212) 786-4939

**Liberty Cleaners**

225 South End Avenue, New York, NY 10280

(212) 945-3075

**Gateway Cleaners**

325 South End Avenue, New York, NY 10280

(212) 321-1010

# CCG



## GETTING AROUND



**\*\* Free Shuttle Service \*\***



**212-566-6700**



No representation is made as to the accuracy of the above information and such information is subject to errors, omission or withdrawal without notice. For updated information please contact the Downtown Alliance.

# CCG



## GETTING AROUND



### SUBWAY & BUS SERVICES



#### **Rector Street**

##### **Station**

On Rector Street and Trinity Place



#### **Rector Street**

##### **Station**

On Rector Street and Greenwich Street



#### **Wall Street**

##### **Station**

On Wall Street and Broadway



#### **M9 Stops**

On South End Avenue and Albany Street

On Battery Place and 3<sup>rd</sup> Place

Route: Water Street – East Broadway – Essex Street / Clinton Street – 14<sup>th</sup> Street

#### **M20 Stop**

On South End Avenue and Albany Street

Route: West Street – Hudson Street – 8<sup>th</sup> Avenue / 7<sup>th</sup> Avenue – Lincoln Center

#### **M22 Stop**

On Vesey Street and North End Avenue

Route: Chamber Street – Worth Street – East Broadway – Grand Street / FDR

Travel Information Center

MTA information website

(718) 330-1234

[www.mta.info](http://www.mta.info)

# CCG



## GETTING AROUND



### TAXI & CAR SERVICES

**Allstate Car & Limo Inc.**

(212) 333-3333

(212) 741-6666

(800) 453-4099

**Atlantic Limo Service**

(800) 798-5068

**Malcolm Car Service**

(212) 690-4000

**Manhattan Car Services**

(212) 343-9696

**Olympic Limo Service**

(212) 995-1200

**Taxi Service in NY by Carmel**

(212) 666-6666

**New Day Car Service (Spanish)**

(212) 420-0101 / (917) 417-9385 (Jose)

**Wan Kuo Car Service (Chinese)**

(212) 233-0005

**Lincoln Car Service (Chinese)**

(212) 571-1135

**Lucky Car Service (Chinese)**

(212) 219-8886

**Royal Lincoln Car Service (Chinese)**

(212) 253-2288

**88 Call Taxi (Korean)**

(212) 888-0000

**Parangse (Korean)**

(212) 666-7777

**On-Time Limousine (Japanese)**

(212) 486-1118



## 8 MINUTE AIRPORT SHUTTLE



### US HELICOPTER

**Book your seat by phone or online:**

(877) 262-7676

[www.flyush.com](http://www.flyush.com)

*A shuttle that takes people from Manhattan to JFK in just 8 minutes. At the heliport, US Helicopter clears you through security and check your bags to your final destination.*

# CCG

## BANKS



**AB Amalgamated Bank**  
America's Labor Bank

(212) 894-3000

**52 Broadway**  
(Between Morris Street & Exchange Place)



(212) 422-8200

**29 Broadway, #20**  
(Between Morris Street & Exchange Place)



(800) 841-4000

**150 Broadway**  
(Corner of Broadway & Liberty Street)



(917) 521-1350

**One Wall Street**  
(Corner of Wall Street & Broadway)

**331 South End Avenue, #337**  
(Between Liberty Street & Albany Street)

(212) 935-9935



(212) 804-5958

**120 Broadway**  
(Between Thames & Cedar Street)



(800) 975-4722

**120 Broadway**  
(Corner of Broadway & Cedar Street)



(646) 344-4800

**2 Wall Street**  
(Corner of Broadway & Wall Street)

CCG



GROCERIES



**ZAYTUNA Market**

**17 Battery Place**

(Corner of Battery Place & Washington Street)

**(212) 871-6300**

**GRISTEDES**

**71 South End Avenue**

(Corner of West Thames & South End Avenue)

**(212) 233-7770**

**315 South End Avenue**

(Between Albany Street & Liberty Street)

**(212) 233-7797**



**Delivered right to your door!**

**[www.freshdirect.com](http://www.freshdirect.com)**



**Delivered right to your door!**

**[www.maxdelivery.com](http://www.maxdelivery.com)**



**270 Greenwich Street**

(Corner of Murray and Greenwich Street)

**(212) 349-6555**

CCG



DELI'S



**Samantha's New York (Deli)**

**235 South End Avenue**

(Between Rector Place & Albany Street)

**(212) 945-5555**

**Champs Gourmet Deli**

**71 Broadway**

(Corner of Trinity Place & Rector Street)

**(212) 363-2100**

**Joe's Gourmet**

**98 Greenwich Street**

(Between Rector Street & Carlisle Street)

**(212) 267-8351**

CCG



PHARMACIES &  
HARDWARE



PHARMACIES



(212) 248-3922

**17 Battery Place**  
(Corner of Battery Place & West Street)



(212) 608-8416

**Four World Financial Center**  
(Between Albany Street & Liberty Street)

**Battery Park Pharmacy Incorporated**

(212) 912-0555

**327 South End Avenue**  
(Between Albany Street & Liberty Street)



(212) 233-4588

**150 Broadway**  
(Between Liberty Street & Cortlandt Street)  
**Vitamins & Food Supplements**

HARDWARE STORES

**Trade Center Hardware**

(212) 962-1086

**45 New Street**  
(Between Beaver Street and Exchange Place)

# CCG



## LOCAL SHOPS



### DEPARTMENT STORES



(212) 227-9092

**22 Cortland Street**

(Between Church Street & Broadway)

**Department Store: clothing, shoes, luggage, housewares, etc.**



(212) 238-9000

**One Park Row**

(Across from City Hall Park)

**Electronics, computers, music, movies, cameras, etc.**

## SYMS

(212) 797-1199

**42 Trinity Place**

(Between Edgar Street & Rector Street)

**Bargains on designer clothing, shoes, for men, women, & children.**



(212) 417-7000

**1 – 4 World Financial Center**

(On West Street; between Albany Street & Vesey Street)

**Multiple Stores: Godiva, Ann Taylor Loft, Banana Republic, etc.**



(212) 422-4477

**50 Broadway**

(Between Morris Street & Exchange Place)

**Clothing bargains**

# CCG



## LOCAL SHOPS



### SHOPS

**AEROSOLE'S** (212) 514-5579

**2 Broadway**  
(Between Beaver Street & Bowling Green)  
**Shoes & Accessories**



(212) 344-2486

**39 Broadway, #1**  
(Between Morris Street & Exchange Alley)  
**Greeting cards, Hallmark brands**



(212) 964-1988

**100 Broadway**  
(Corner of Pine Street & Broadway)  
**Books, music, movies, etc.**



(212) 267-2400

**1 Church Street**  
(Between Cortlandt Street & Liberty Street)  
**Clothing: Men, Women, & Boys**

**City Blossom, Inc.** (212) 269-8190

**17 Battery Place**  
(Between Battery Place & Morris Street)  
**Flower Shop**



(212) 233-0675

**115 Broadway**  
(Corner of Broadway & Cedar Street)  
**Men's Clothing & Accessories**

# CCG



## LOCAL SHOPS



### SHOPS (CONT...)

**NINE WEST** (212) 968-1521  
2 Broadway  
(Between Beaver Street & Bowling Green)  
Lady shoes

**RadioShack** (212) 482-8138  
9 Broadway  
(Between Morris Street & Battery Place)  
Electronics, Cellular & Mobile Telephone equipment, etc.

**BARNES & NOBLE**  
BOOKSELLERS (212) 587-5389  
97 Warren Street  
(On the corner of Warren and Greenwich Street)  
Books, Magazines, CDs & DVDs

ANN TAYLOR  
**LOFT** (212) 945-1991  
225 Liberty Street  
(World Financial Center)  
Women's Clothing and Accessories

**BED BATH & BEYOND**  
270 Greenwich Street  
(Between Warren and Murray Street)  
Bedding, Kitchen, Beach/Pool, Seasonal stuff, Outdoor Furniture

CCG



CAFÉ'S



(212) 406-4444

**94 Greenwich Street**  
(Corner of Greenwich Street & Rector Street)



(212) 766-6100

**120 Broadway, #230 (Cedar Street Entrance)**  
(Between Broadway & Nassau Street)

Merchants NY *café*

(212) 363-6000

**90 Washington Street**  
(Corner of Rector Street & Washington Street)



(212) 732-9268

**115 Broadway**  
(Corner of Broadway & Cedar Street)

# CCG



## RESTAURANTS



### ASIAN CUISINE

#### **CHINA CHALET**

**47 Broadway, #2**

(Corner of Exchange Place & Broadway)

**Specialty:** **Chine Cuisine**

**(212) 943-4380**



**102 North End Avenue**

(Behind Embassy Suite Hotel)

**Specialty:** **Chinese Cuisine & Noodles**

**(212) 786-1300**

#### **Se Ja Meh**

**114 Greenwich Street**

(Corner of Albany Street)

**Specialty:** **Korean Cuisine**

**(212) 766-5825**

**www.sejameh.com**

### IRISH CUISINE

#### **Moran's**

**103 Washington Street**

(Between Rector Street & Carlisle Street)

**Specialty:** **Irish Cuisine**, Potpie, Sandwich, Salad, Bar

**(212) 732-2020**

#### **Blarney Stone**

**11 Trinity Place**

(Between Morris Street & Exchange Alley)

**Specialty:** **Irish Bar & Restaurant**

**(212) 269-4988**

CCG



RESTAURANTS



ITALIAN CUISINE

**Caracello Ristorante**

**(212) 571-1177**

**108 Greenwich Street**

(Between Rector Street & Carlisle Street)

**Specialty:** Italian Cuisine

**Gigino**

**(212) 528-2228**

**20 Battery Place**

(Between West Street & Washington Street)

**Specialty:** Italian Cuisine

SPANISH CUISINE

**Tajin Restaurant**

**(212) 509-5017**

**85 Greenwich Street**

(Between Rector Street & Edgar Street)

**Specialty:** Mexican Cuisine

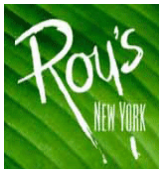
# CCG



## RESTAURANTS



### MIXED CUISINE



#### **Roy's New York Restaurant**

**85 West Street** (Corner of Albany Street & West Street)

**Specialty:** **Hawaiian / French Fusion**

**(212) 266-6262**

[www.roysnewyork.com](http://www.roysnewyork.com)



**47 Broadway**

(Between Exchange Place & Morris Street)

**Specialty:** **American Family Restaurant**

**(212) 483-8322**

#### **Sophie's Restaurant**

**96 Chamber Street**

(Between Church Street & Broadway)

**Specialty:** **Cuban Cuisine**

**(212) 608-9900**

#### **Gate House**

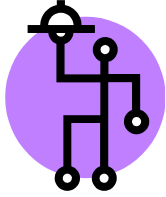
**301 South End Avenue**

(Corner of Albany Street & South End Avenue)

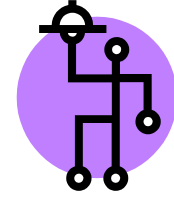
**Specialty:** **American food, sushi**

**(212) 488-8444**

# CCG



## A QUICK BITE



(212) 791-0821

**106 Greenwich Street Broadway**  
(Between Rector Street & Carlisle Street)  
Specialty: Sandwiches



(212) 425-6648

**44 Trinity Place**  
(Between Rector Street & Exchange Alley)  
Specialty: Sandwiches

**Charlie's** (24hrs)

(212) 566-0006

**110 Trinity Place**  
(Corner of Trinity Place & Cedar Street)  
Specialty: Burgers, Sandwiches, Mexican, Wings

**George's Restaurant**

(212) 269-8026

**11 Rector Street**  
(Corner of Rector Street & Carlisle Street)  
Specialty: Diner's food

**Planet Gyro**

(212) 267-4976

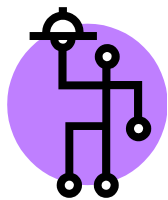
**94 Greenwich Street**  
(Between Greenwich Street & Washington Street)  
Specialty: Gyros



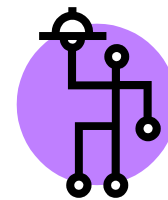
**19 Rector Street**  
Specialty: Assorted doughnuts, beverages, coffee

(212) 785-8111

# CCG



## A QUICK BITE



### PIZZERIA

**Cordato's New York** (24hrs) (212) 233-1573

**94 Greenwich Street**  
(Between Rector Street & Carlisle Street)  
Specialty: Sandwiches & Pizza

**Sale & Pepe** (212) 968-7700

**One Exchange Plaza**  
(Between Trinity Place & Broadway)  
Specialty: Sandwiches, Pizza

**Picasso** (212) 321-2616

**303 South End Avenue**  
(Between Albany Street & Liberty Street)  
Specialty: Pizzeria

### PATISSERIE

**Colombus Bakery** (212) 945-9404

**2 World Financial Center**  
(Inside WFC near Vesey Street)  
Specialty: Patisserie



**3-4 World Financial Center** (212) 786-3220

(Inside WFC near Vesey Street)  
Specialty: Patisserie

**35 Cedar Street @ 10 Liberty Plaza** (212) 952-3838

(Between Pearl and William)  
Specialty: Patisserie

**62 Stone Street** (212) 344-5600

(Between Mill Lane and Hanover Sq)  
Specialty: Patisserie

# CCG



## LOUNGES



### **Pussycat Lounge**

**96 Greenwich Street**

(Between Rector Street & Carlisle Street)

**Specialty:** Restaurant, Bar, Cabaret

**(212) 349-4800**



## MUSEUMS & CULTURE



### **National Museum of the American Indian**

**On Bowling Green**

(Between Broadway & State Street)

**(212) 514-3700**

### **South Street Seaport Museum**

**12 Fulton Street**

(On the corner of Fulton and Front Street)

**(212) 748-8600**

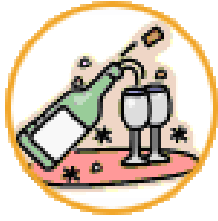
### **The Skyscraper Museum**

**39 Battery Place**

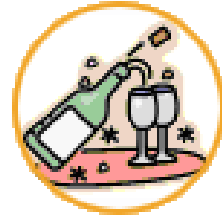
(On the corner of Battery and 1<sup>st</sup> Place)

**(212) 968-1961**

CCG



PLACE & TASTE  
(OUTSIDE BPC)



Check out our **Place & Taste** section on our website from time to time to find fun things to do and try around NYC.

**[www.CCG-BPC.com](http://www.CCG-BPC.com)**

# CCG

## SERVICES



### REPAIRS

#### **Shoe Repair**

**71 Broadway**

(Corner of Rector Street & Trinity Place)

**Specialty:** Shoe & Watch repair, Batteries, Keys made

### WIRELESS / CELLULAR



**(212) 571-5077**

**170 Broadway**

(Between Dey Street & Cortlandt Street)

[www.t-mobile.com](http://www.t-mobile.com)



**(212) 233-5727**

**170 Broadway**

(Between Dey Street & Cortlandt Street)

[www.sprint.com](http://www.sprint.com)



**(212) 510-6160**

**100 Wall Street**

(Between Water Street & Front Street)

[www.verizonwireless.com](http://www.verizonwireless.com)



**(212) 227-3240**

**150 Fulton Street**

(Between Broadway & Nassau Street)

[www.att.com](http://www.att.com)

### SALON

#### **The Vince Smith Hair Experience**

**300 Rector Place**

(On South End Ave., bet. West Thames St. & Rector Place)

**(212) 945-1590**

[www.hairexperience.com](http://www.hairexperience.com)

#### **Salon Greenwich**

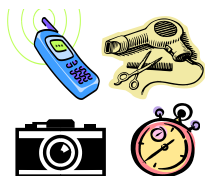
**88 Greenwich Street**

**(212) 248-5252**

[SalonGreenwich@hotmail.com](mailto:SalonGreenwich@hotmail.com)

# CCG

## SERVICES



### PHOTO FINISHING



**71 Broadway**

(Corner of Rector Street & Broadway)

**(212) 509-5901**

### VIDEO RENTALS



**Specialty:** free shipping, no late fees, over 60,000 titles

**[www.netflix.com](http://www.netflix.com)**



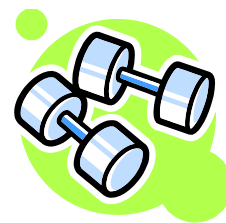
**Specialty:** DVD rentals directly to your door

**[www.blockbuster.com](http://www.blockbuster.com)**

# CCG



## HEALTH & FITNESS



### **Battery Park Swim & Fitness Center**

**(212) 321-1117**

**375 South End Avenue**

(Corner of Liberty Street & South End Avenue)

### **New York Health & Racquet Club**

**(212) 269-9800**

**3 New York Plaza**

(Corner of Pearl Street & Whitehall Street)



**(212) 945-3535**

**102 North End Avenue**

(Corner of Vesey Street & North End Avenue)

### **Equinox**

**(212) 964-6688**

**14 Wall Street**

(Between Nassau Street & Broadway)

### **The Terrace Health Club**

**(212) 945-3665**

**380 Rector Place**

(Between South End Avenue & the Esplanade)

<http://www.completebody.com/ptrain/terrace.html>

**200 Rector Place, 46<sup>th</sup> Flr** (Liberty Court Residences Only)

**(212) 945-4200**

(Corner of West Street & Rector Place)

### **Trinity Boxing Club**

**(212) 374-9393**

**110 Greenwich Street**

(Between Carlisle Street & Albany Street)

[www.trinityboxing.com](http://www.trinityboxing.com)

# CCG



## CHILD CARE & LOCAL SCHOOLS



### PUBLIC SCHOOLS

#### **Public School 89 (K thru 8)**

**201 Warren Street**  
New York, NY 10282

**(212) 571-5659**

#### **Public School 234 (K thru 5)**

**292 Greenwich Street**  
New York, NY 10007

**(212) 233-6034**

[www.ps234.org](http://www.ps234.org)

**Email: [info@ps234.org](mailto:info@ps234.org)**

#### **Public School 150 (K thru 5)**

##### **Tribeca Learning Center**

**334 Greenwich Street**  
New York, NY 10013

**(212) 732-4392**

[www.ps150.net](http://www.ps150.net)

#### **High School For Leadership & Public Service**

**90 Trinity Place**  
New York, NY 10006

**(212) 346-0007**

### PRIVATE SCHOOLS

#### **St. Luke's (Pre-K thru 8)**

**487 Hudson Street**  
New York, NY 10014

**(212) 924-5960**

[www.stlukeschool.org](http://www.stlukeschool.org)

### CHILD CARE CENTERS

#### **Battery Park City Day Nursery**

**215 South End Avenue**  
(Between Rector Place & Albany Street)  
New York, NY 10280

**(212) 945-0088**

[www.bpcdaynursery.com](http://www.bpcdaynursery.com)

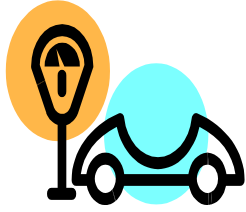
**Mon-Fri: 8am-6pm**

#### **Buckle My Shoe Learning Center (Infant- 5 yrs)**

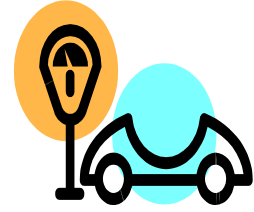
**40 Worth Street**  
(Between West Broadway & Church Street)  
New York, NY 10013

**(212) 374-1489**

**Mon-Fri: 8am-6pm**



CCG  
DRIVING &  
PARKING



NYS DEPARTMENT OF MOTOR VEHICLES

**NYS Dept. of Motor Vehicles**

**(212) 645-5550**

**11 Greenwich Street**

(Between Battery Place & Morris Street)

GARAGE

**Beth Parking**

**(212) 945-1876**

**225 Rector Place**

(Entrance located on Albany Street between West & South End Avenue)

**Edison Parking Management**

**(212) 786-4796**

**200 Rector Place**

(Entrance located on West Thames Street between Battery Place & South End Avenue)

**Hudson Tower Garage**

**(212) 945-3646**

**333 Rector Place**

(Entrance located at 350 Albany Street)

**Jade Car Park**

**(212) 766-1929**

**2 South End Avenue**

(Entrance located at the corner of 3<sup>rd</sup> Street & Battery Place)

**State Pearl Garage, Inc.**

**(212) 248-5752**

**1 Battery Park Plaza**

(Corner of Edgar Street & Greenwich Street)

CCG

HOTELS &  
ACCOMODATIONS



HOTELS IN THE FINANCIAL DISTRICT

**Marriott New York Downtown**

**(212) 385-4900**

**85 West Street at Albany Street**

**Club Quarters, Downtown**

**(212) 269-6400**

**52 William Street**

**Cild Hall, A Thompson Hotel**

**(212) 232-7700**

**15 Gold Street**

**The Ritz-Carlton, Battery Park**

**(212) 344-0800**

**15 Gold Street**

**Eurostars Wall Street**

**(212) 742-0003**

**129 Front Street**

ACCOMODATION

**Eleni's Bed & Breakfast**

**(347) 610-6407**

**89 Greenwich Street**

**(Corner with Rector Street)**

# CCG



## TRAVELING



### **Air Canada**

(888) 247-2262

[www.AirCanada.com](http://www.AirCanada.com)

### **Air France**

(800) 237-2747

[www.AirFrance.com](http://www.AirFrance.com)

### **American Airlines**

(800) 433-7300

[www.AmericanAirlines.com](http://www.AmericanAirlines.com)

### **British Airways**

(800) 247-9297

[www.BritishAirways.com](http://www.BritishAirways.com)

### **China Airlines**

(917) 368-2000 Ext.3

[www.China-Airlines.com](http://www.China-Airlines.com)

### **Continental**

(800) 525-0280

[www.Continental.com](http://www.Continental.com)

### **Delta Airlines**

(800) 221-1212

### **Japan Airlines**

(800) 525-3663

### **jetBlue Airways - Corporate Office**

Floral Park, NY 11001

(800) JET-BLUE

(800) 538-2583

[www.jetblue.com](http://www.jetblue.com)

### **Korean Air**

(800) 438-5000

[www.KoreanAir.com](http://www.KoreanAir.com)

### **Northwest Airlines**

(800) 225-2525

[www.nwa.com](http://www.nwa.com)

### **Singapore Airlines**

(800) 742-3333

[www.singaporeairlines.com](http://www.singaporeairlines.com)

### **United Airlines**

(800) 241-6522

[www.ual.com](http://www.ual.com)

### **US Airways**

(800) 428-4322

[www.usairways.com](http://www.usairways.com)

## **Airline Ticket Booking Sites**

### **Discount online flight tickets**

[www.cheaptickets.com](http://www.cheaptickets.com)

[www.travelocity.com](http://www.travelocity.com)

[www.hotwire.com](http://www.hotwire.com)

[www.expedia.com](http://www.expedia.com)

[www.orbitz.com](http://www.orbitz.com)

[www.priceline.com](http://www.priceline.com)

CCG



TRAVELING



**JFK International Airport**

JFK Expressway

Jamaica, NY 11430 US

**Airport Information (718) 244-4444**

**LaGuardia Airport**

LaGuardia Airport

Flushing, NY 11371 US

**Recorded Information (718) 533-3400**

**Newark Liberty International Airport**

10 Toler Place

Newark, NJ 07114-1431 US

**Airport Information (973) 961-6000**

# CCG

## HEALTH & SAFETY

<b>EMERGENCY NUMBER</b>	<b>911</b>
<b>POISON CONTROL</b>	<b>(800) 222-1222</b>
<u>POLICE DEPARTMENT</u>	
<b>NYPD 1<sup>st</sup> Precinct</b> <b>16 Ericsson Place</b> New York, NY 10013	<b>(212) 334-0611</b>
<u>HOSPITALS / DOCTORS</u>	
<b>NYU Downtown Hospital</b> <b>170 William Street</b> New York, NY 10038	<b>(212) 312-5000</b>
<b>Thelma Reyes, MD</b> <b>350 Albany Street</b> New York, NY 10280	<b>(212) 786-1445</b>
<b>Battery Park Dental Center</b> <b>250 South End Avenue</b> New York, NY 10280	<b>(212) 945-0600</b>
<b>Glenn J. Chiarello, DDS</b> <b>375 South End Avenue</b> New York, NY 10280	<b>(212) 321-1800</b>
<b>Steven D. Cohen, Chiropractor</b> <b>375 South End Avenue</b> New York, NY 10280	<b>(212) 321-1922</b>
<b>Battery Park Vision Associates</b> <b>99 Battery Place</b> New York, NY 10280	<b>(212) 945-6789</b>
<b>Optometric Arts</b> <b>200 Liberty Street, Lobby Level 2</b> New York, NY 10281	<b>(212) 945-3498</b>
<b>Battery Park Veterinary Hospital</b> <b>21 South End Avenue</b> New York, NY 10280	<b>(212) 786-4444</b> <b><a href="http://www.dvmhospitals.com">www.dvmhospitals.com</a></b>

# CCG

## USEFUL NUMBERS

<b>Emergencies (Police &amp; Fire)</b>	<b>911</b>
City Terrorism Hotline	(888) 692-7233
First Precinct (NYPD)	(212) 334-0611
Noise Complaints (DEP)	(718) 337-4357
Quality of Life Complaints	(888) 677-5433
<b>NYC Dept. of Information (DOITT)</b>	<b>311</b>
Traveler's Aid Society	(718) 656-4870
Subway & Bus Information	(718) 330-1234
New York Waterway	(800) 533-3779
Park Enforcement Patrol (PEP)	(212) 417-3100
Parks Department	(800) 201-7275
Towed Cars	(212) 971-0778
Towed Vehicle Information	(212) 869-2929
Daily Parking Regulations	(212) 225-5368
Community Board One	(212) 442-5050
Consumer Affairs	(212) 487-4444
<b>Battery Park City Authority</b>	<b>(212) 417-2000</b>
Battery Park City Parks Conservancy	(212) 267-9700
<b>World Financial Center</b>	<b>(212) 945-2600</b>
WFC Arts & Events	(212) 945-0505
New York Public Library (New Amsterdam Branch)	(212) 732-8186
	<a href="http://www.nypl.org">www.nypl.org</a>

# CCG

## TIME ZONES

Time Zone differences from New York City (Eastern Time Zone)

Country	Hrs.	Country	Hrs.	Country	Hrs.
<b>Hours Ahead</b>		Iran	+8.5	San Marino	+6
Algeria	+6	Iraq	+8	Singapore	+13
Antilles	+1	Ireland	+5	Slovenia	+6
Argentina	+2	Israel	+7	South Africa	+7
Australia	+15	Italy	+6	Spain	+6
Austria	+6	Japan	+14	Sweden	+6
Bahrain	+8	Jordan	+7	Ukraine	+7
Barbados	+1	Kenya	+8	Thailand	+12
Belgium	+6	S. Korea	+14	Switzerland	+6
Bermuda	+1	Kuwait	+8	Syria	+7
Bolivia	+1	Latvia/Lithuania	+7	Taiwan	+13
Brazil/Rio	+2	Lebanon	+7	Trinidad	+1
Bulgaria	+7	Liberia	+5	Turkey	+7
Burma	+12	Liechtenstein	+6	United Arab	
Chile	+1	Luxembourg	+6	Emirates	+9
China/Beijing	+13	Malaysia	+13	United Kingdom	+5
Croatia	+6	Monaco	+6	Uruguay	+2
Cyprus	+7	Morocco	+5	Vatican City	+6
Fiji	+17	Netherlands	+6	Vietnam	+13
Czech/Slovakia	+6	New Caledonia	+16	Yugoslavia	+6
Denmark	+6	New Zealand	+17		
Dominican-Rep.	+1	Nigeria	+6	<b>Hours Behind</b>	
Egypt	+7	Norway	+6	Alaska/Anchor	-4
Finland	+7	Pakistan	+10	Vancouver	-3
France	+6	Papua/N.Guinea	+15	Costa Rica	-1
Germany	+6	Paraguay	+2	El Salvador	-1
Greece	+7	Philippines	+13	Guatemala	-1
Guyana	+2	Portugal	+5	Hawaii	-5
Hungry	+6	Puerto Rico	+1	Mexico	-1
Iceland	+5	Rumania	+7	Nicaragua	-1
India/Calcutta	+10.5	Russia/Moscow	+8	Tahiti	-5

# CCG

## INFORMATION WEBSITES

### CREDIT BUREAUS

[www.equifax.com](http://www.equifax.com)  
[www.experian.com](http://www.experian.com)  
[www.transunion.com](http://www.transunion.com)

### PHONEBOOK DIRECTORIES

[www.yellowpages.com](http://www.yellowpages.com)  
[www.whitepages.com](http://www.whitepages.com)

### ABOUT NEW YORK CITY

[www.nyc.gov](http://www.nyc.gov)

### NY PUBLIC LIBRARY

[www.nypl.org](http://www.nypl.org)

### POPULAR SEARCH ENGINES

[www.google.com](http://www.google.com)  
[www.yahoo.com](http://www.yahoo.com)  
[www.askjeeves.com](http://www.askjeeves.com)

### PUBLIC TRANSPORTATION

[www.mta.info](http://www.mta.info)

### POPULAR ONLINE SHOPPING

[www.ebay.com](http://www.ebay.com)  
[www.amazon.com](http://www.amazon.com)  
[www.overstock.com](http://www.overstock.com)  
[www.newegg.com](http://www.newegg.com)